



Int. Production JCS



EN 1090-1
Factory
Production
Control

www.tuv.com
ID 9105084113

UL. OKRĘTOWA 2; 74-320 BARLINEK / TEL./FAX +48 95 746 10 34 / www.int-production.pl

We are in Barlinek

LOCATION:

BARLINEK:



Town in the north-western part of Poland, on the border of West Pomerania and Lubuskie, **70 km** south of Szczecin and **30 km north** of Gorzów Wielkopolski and **100 km east of Berlin**, near the county roads 156 and 151, and the distance **17 km** from the national road S3.



HISTORY AND DEVELOPMENT

1990-2007



INT. Transport JensChr. SiigExport-Import - transport service

2010



Implementation of Qualifications Welding Technology (WPQR)

2015



Implementation of standard PN-EN ISO 1090 I PN-EN ISO 3834-1 and obtaining certificates

2008-2010



INT. Transport-Production-Wind Energy Jens Chr. Siig-transport service and production of welded structures.

Since 2011



Separated as INT. Production JCS Sp. z o.o. - production of welded structures

2019



Implementation of standard EN 15085-2:2007 Level CL1 and obtaining certificate

2023



obtaining qualifications in the field of welding and non-destructive testing in accordance with the standards Norsok M-101:2011 and DVN-OS-C401:2021.

Certificate

Inspection of welding process

Certificate No.

01 8610 PL/A-210132.00

Name and address of the manufacturer

INT. Production JCS Sp. z o.o

Pelczycka 17

74-320 Barlinek

Polska

Specification(s)

EN ISO 3834-2:2005

Test report No.

3834/8495631 /2021

Certification scope

Inspection of welding processes according to EN ISO 3834-2

Manufacturing plant

Barlinek 74-320; Okrętowa 2

Period of validity

4.10.2021 - 3.10.2024

Zabrze, 04.10.2021

Leszek Zadroga

Certification Body

PCA

PRECISELY RIGHT

AC 141

TÜVRheinland®

Precisely Right.

WELDING CERTIFICATE

1090-2.84936954.TUVRhPI.21.02

In accordance with EN 1090-1:2009+A1:2011, table B.1. for execution of structural steel components EN 1090-2:2018

Manufacturer

Int. Production JCS Sp. z o.o

Pelczycka 17

74-320- Barlinek

Polska

Okrętowa 2, 74-320 Barlinek

Manufacturing plant

Production facility of the manufacturer

Technical specification

EN 1090-2:2018

Execution class(es)

EXC2 acc. to EN 1090-1:2009+A1:2011

Welding Process(es)

135 - Metal active gas welding, partly mechanized

Material group

1.1, 1.2 according to CEN ISO/TR 15088

Responsible welding coordinator

IWT, PL - IWT - 0084/2009

Confirmation

All provisions concerning welding as described in the above mentioned technical specification(s) were applied.

Begin of validity

07.08.2018

Period of validity

30.09.2024

Place and date of issue

Zabrze, 04.10.2021

PCA

PRECISELY RIGHT

AC 141

TÜVRheinland®

Precisely Right.

CERTIFICATE

conformity of the Factory Production Control

2627-CPR-1090-1.84936954.TUVRhPI.21.02

In compliance with Regulation 305/2011/EU of the European Parliament and of the Council of 9 March 2011 (the Construction Products Regulations - CPR)

This certificate applies to the following construction product:

Construction product

Structural components and kits for steel structures to EXC2 according to EN 1090-2:2018

Intended use

for load-bearing structures in all types of buildings

CE-marking method

ZA.3.2, ZA.3.4 according to EN 1090-1:2009+A1:2011

Manufacturer

Int. Production JCS Sp. z o.o

Pelczycka 17

74-320- Barlinek

Polska

Okrętowa 2, 74-320 Barlinek

Manufacturing plant

Production facility of the manufacturer

Confirmation

This certificate attests that all provisions concerning the assessment and verification of constancy of performance described in Annex ZA of the harmonised standard

EN 1090-1:2009+A1:2011

under system 2+ are applied, and that the factory production control fulfils all the prescribed requirements stated therein.

Date of first issue

07.08.2018

Next Surveillance inspection

30.09.2024

Period of validity

Place and date of issue

Zabrze, 04.10.2021

PCA

PRECISELY RIGHT

AC 141

TÜVRheinland®

Precisely Right.

CERTIFICATE

Welding of railway vehicles and components according to EN 15085-2:2020

This is to certify that

INT PRODUCTION JCS Sp. z o.o.

ul. Okrętowa 2

74-320 Barlinek

Poland

Is qualified to perform welding work within the range of certification of:

Classification level CL 1 and type of activity

P – production according to EN 15085-2:2020

Field of application:

Manufacturing of new assemblies and components for railway vehicles, except design and except purchasing of welded parts.

Range of certification

Welding process according to EN ISO 4063	Material group according to EN 15085-2:2020	Dimensions	Comments
135	1.2	t = 3÷28 mm	BW
		t = 3÷90 mm	FW
		t = 2÷30 mm	FW
		D ≥ 25 mm	FW
	8.1 + 1.2	11.2 ≤ mm; 12 * 8 * 20 mm	FW

Responsible welding coordinator:

Tomasz Zyr (IWE)

born: 03.12.1960

Deputy with equal rights:

Robert Wiśniński (EWE)

born: 08.12.1971

Deputy:

born: -

Comments:

see reverse

Certificate no.:

TUVRh/15085/CL1/PL002/23

Valid:

from 20.12.2022 to 19.12.2025

Issued on:

03.01.2023

Auditor:

Paweł Szczepanik

General regulations (see reverse)

PCA

PRECISELY RIGHT

AC 141

TÜVRheinland®

Precisely Right.

CERTIFICATE

WELDING CERTIFICATE

CERTIFICATE OF THE
FACTORY PRODUCTION
CONTROL

CERTIFICATE OF
WELDING OF
RAILWAY VEHICLES

CERTIFICATES

Our company complies with the requirements of the quality of production processes

INT Production JCS



Our company targets

TARGETS



HIGH QUALITY

Achieving customer satisfaction through the implementation of its orders



SATISFACTION

Constant increase customer satisfaction resulting from our services



ALWAYS ON TIME

Production welded structures with high quality and delivery always on time



DEVELOPMENT

Innovation and drive for continuous development.



Production

PRODUCTION HALL

Production hall with an area of 2200m²

Our warehouse

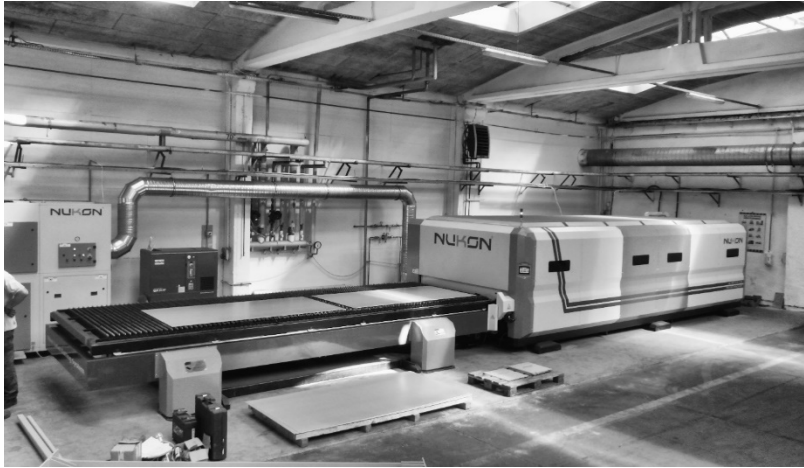
WAREHOUSE

Steel warehouse with an area about 1000m²



What can we do for you?

PRODUCTION POSSIBILITIES



LASER NUKON NF PRO 620 4kW

Fiber laser cutting Machine is turning over a new leaf in the sheet metal processing technology. Nukon fiber laser cutting system is manufactured to meet the demands of fast, high-evolving industry. This machine is manufactured in a flexible design by NUKON's engineers.



PRODUCTION POSSIBILITIES OF THE LASER

Sheet thickness:
- steel 1-20 mm,
- stainless steel 1-12 mm,
- aluminum 1-10 mm
Format sheet 6000 mm x 2000 mm
2 movable tables

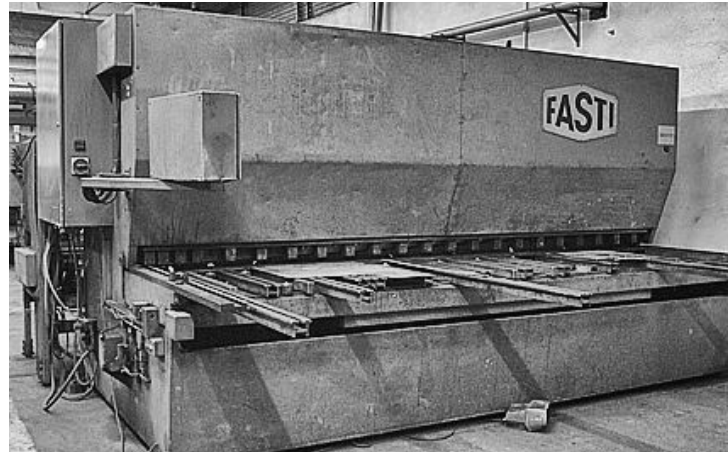
What can we do for you?

PRODUCTION POSSIBILITIES



Plasma cutting CNC

sheet thickness: 1-20mm
sheet format: 3000x6000mm



Shear

sheet thickness: 1-10mm
sheet format: 4000x6000mm

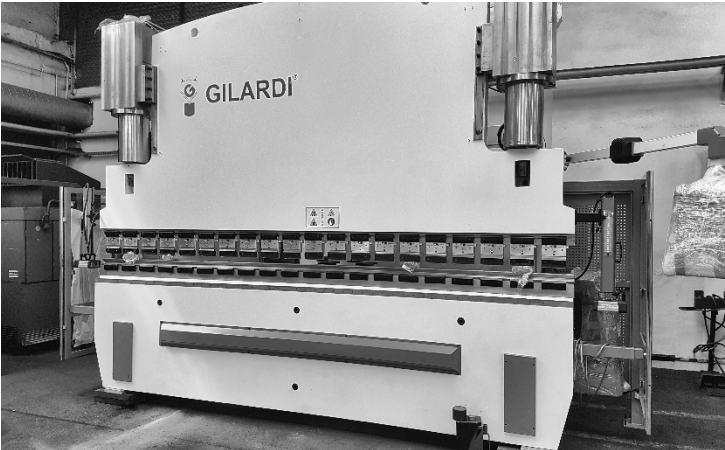


Shear

sheet thickness: 1-6mm
sheet format: 3000x6000mm

What can we do for you?

PRODUCTION POSSIBILITIES



CNC-controlled hydraulic press brake

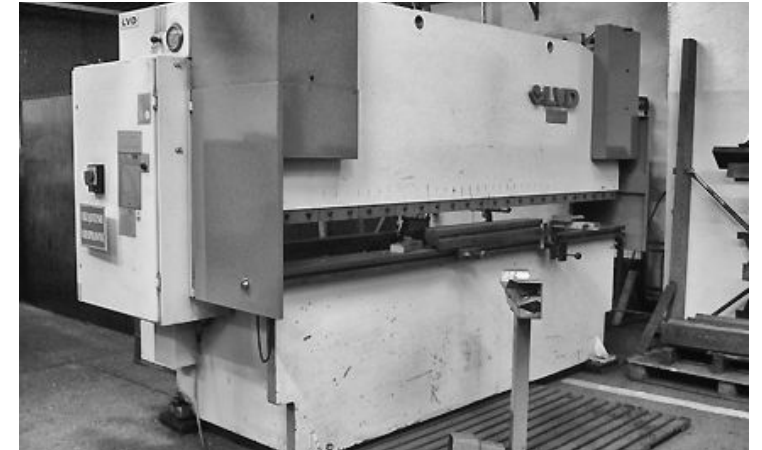
bending line length: up to 4000 mm
pressure: 400 t
control in 5 axes

INT Production JCS



CNC- controlled press brake

sheet thickness: 1-25mm
bending line length: up to 4000mm



CNC- controlled press brake

sheet thickness: 1-6mm
bending line length: up to 3000mm

What can we do for you?

PRODUCTION POSSIBILITIES



Semiautomatic saw band KESMAK KLY 2DG 750

Cutting area: up to 750mm

Cutting „to both sides” possible



Blasting chamber

Surface treatment - blasting to SA2,5



Posts welding methods MIG/MAG, TIG

Our production possibilities

OFFER

- » Production welded structures made of steel S235, S355, stainless steel and aluminum
- » Production of welded structure hot-dip galvanized, electroplating, painted and metallizing
- » Service of thermal cutting- plasma and laser machines
- » Service of bending
- » Performing NDT in accordance with PN-EN ISO 9712, Norsok M-101:2011 and DVN-OS-C401:2021 in the methods VT, PT, MT, UT

INT Production JCS



Our products

We produce, among others: trailer constructions

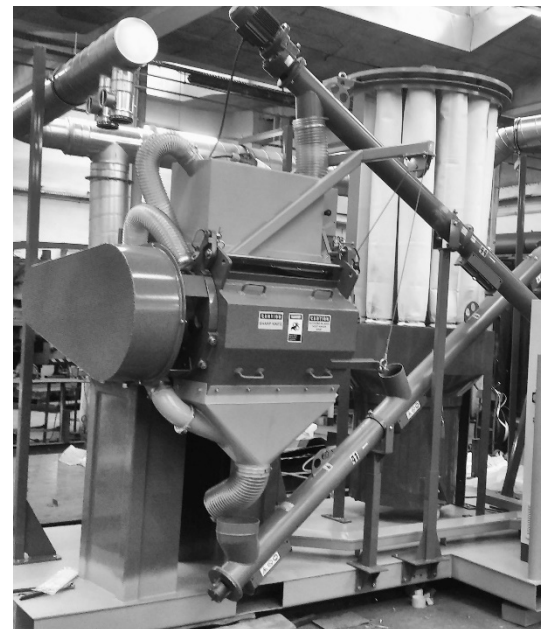
INT Production JCS



Our products

Recycling machines

INT Production JCS



Our products

Constructions for railway industry

INT Production JCS



Our products

Welded structures used in special transport

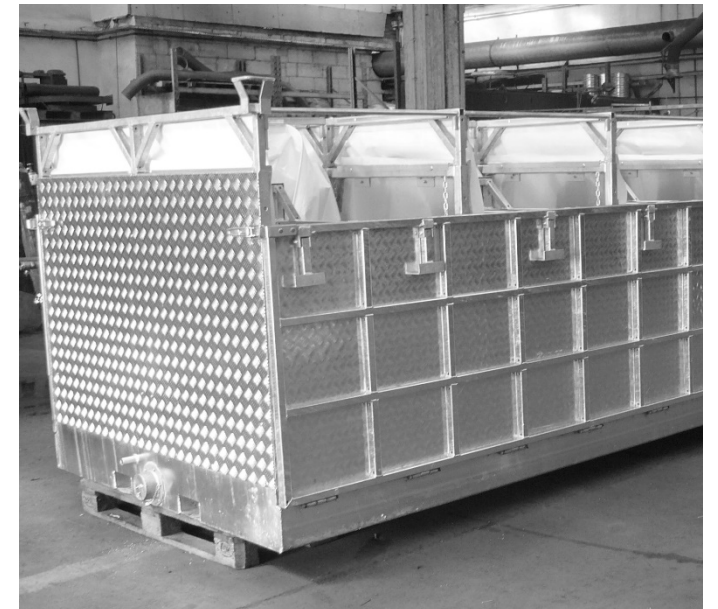
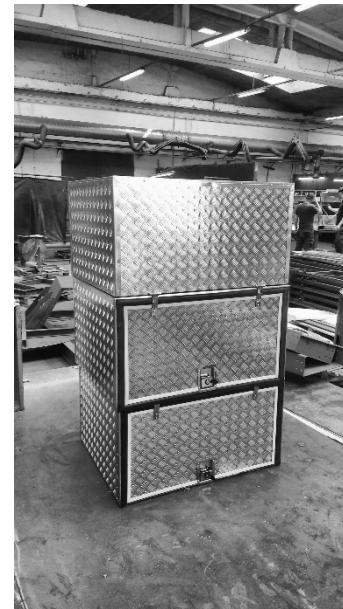
INT Production JCS



Our products

Welded constructions used in mass events.

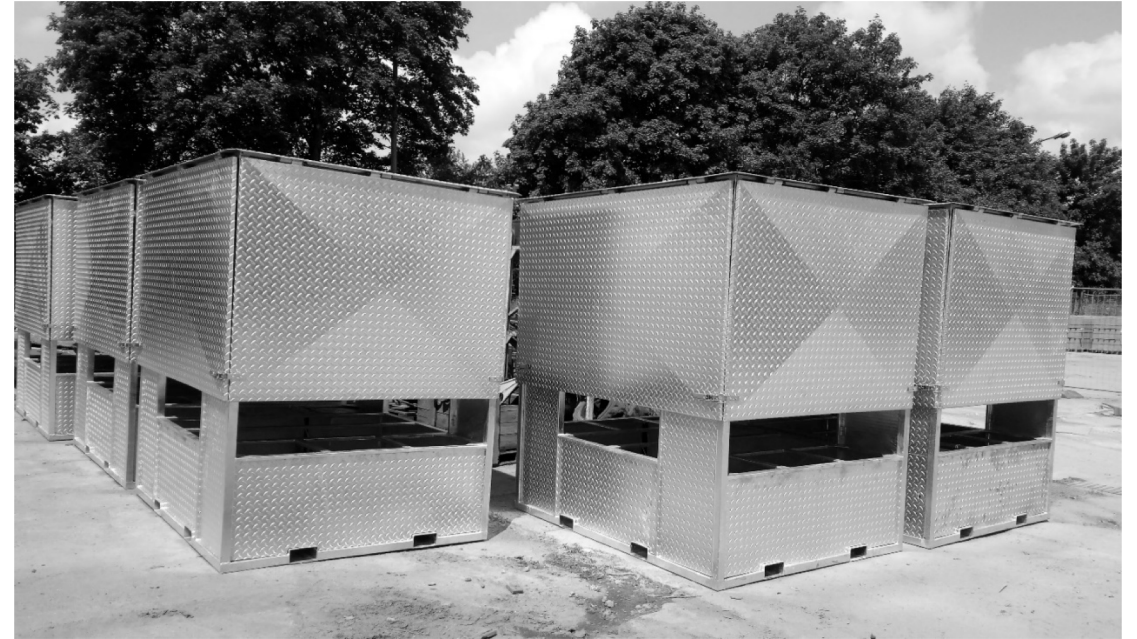
INT Production JCS



Our products

Constructions of boxes for storing luggage

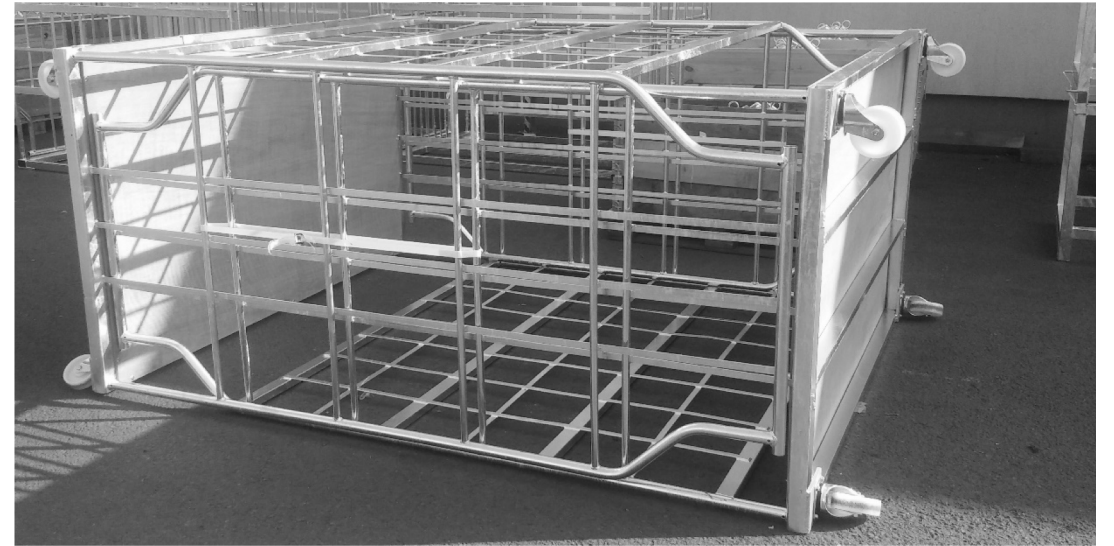
INT Production JCS



Our products

Trolleys and parts used for transport and storage tables and benches

INT Production JCS



Our products

Transport welded constructions

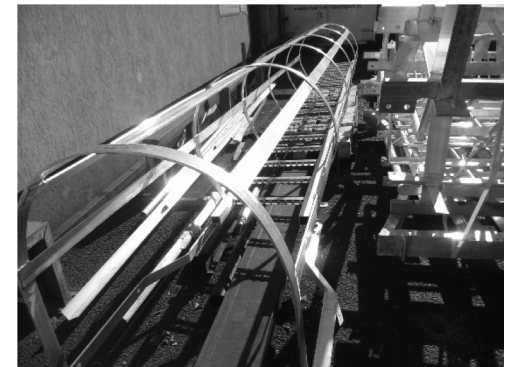
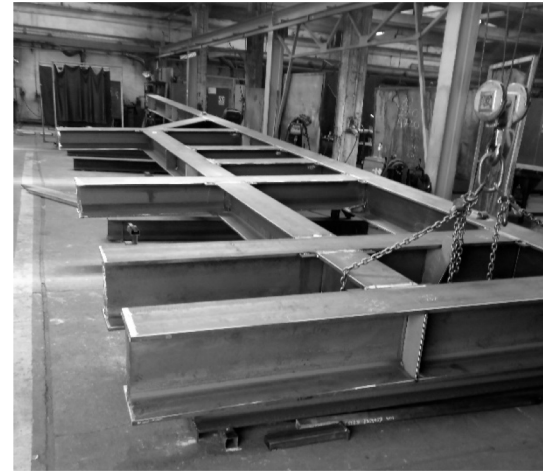
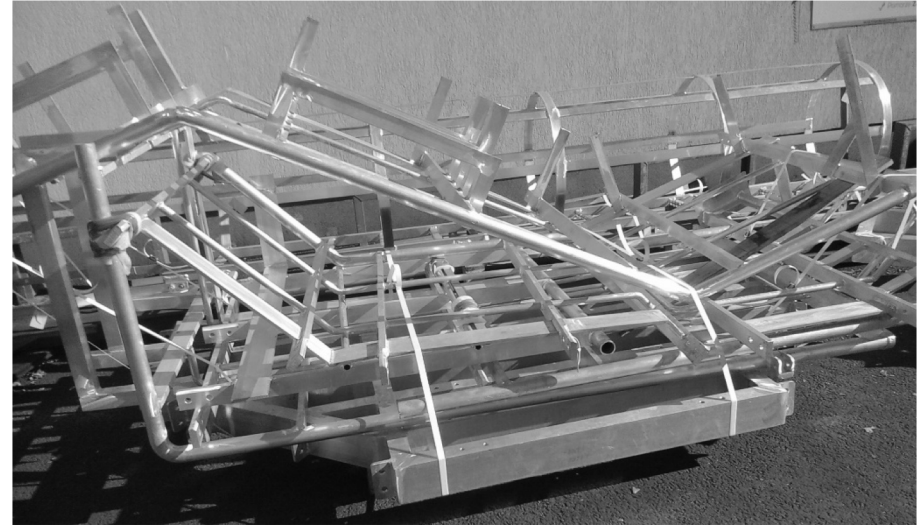
INT Production JCS



Our products

Offshore constructions

INT Production JCS



Our products

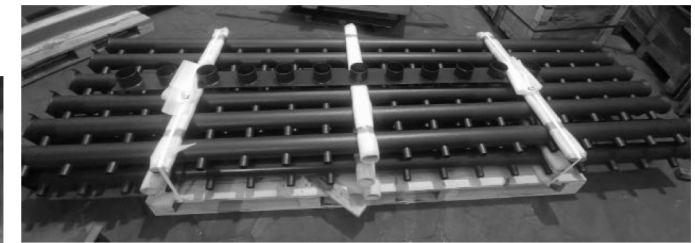
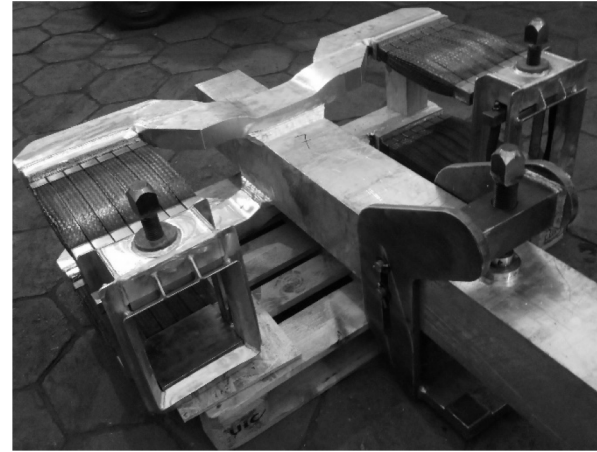
Troughs and various types of waste containers



Our products

Constructions for steel works

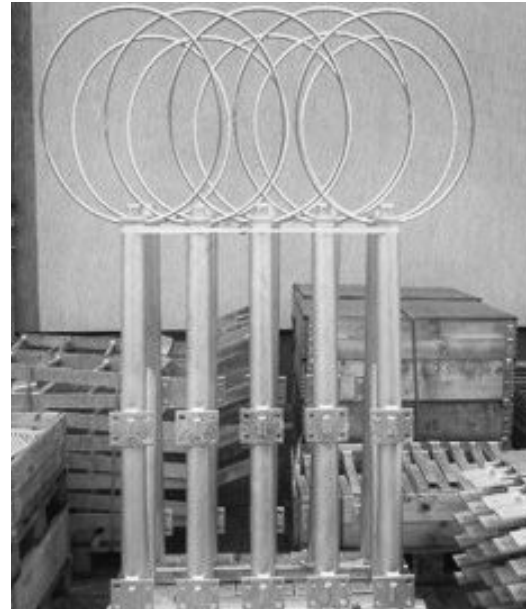
INT Production JCS



Our products

Welded constructions of wind turbines

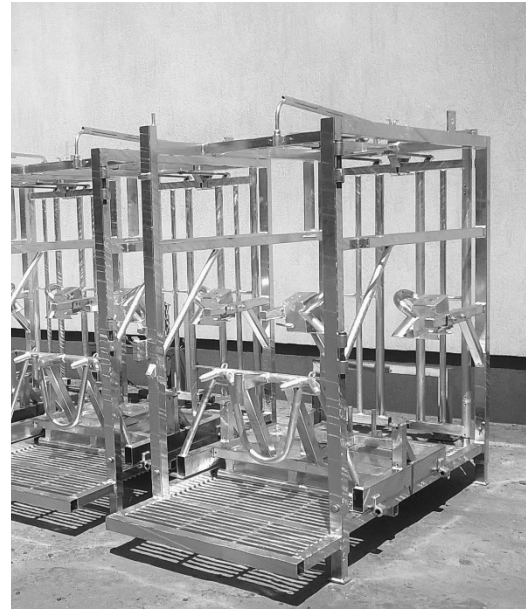
INT Production JCS



Our products

Welded structures used in agriculture

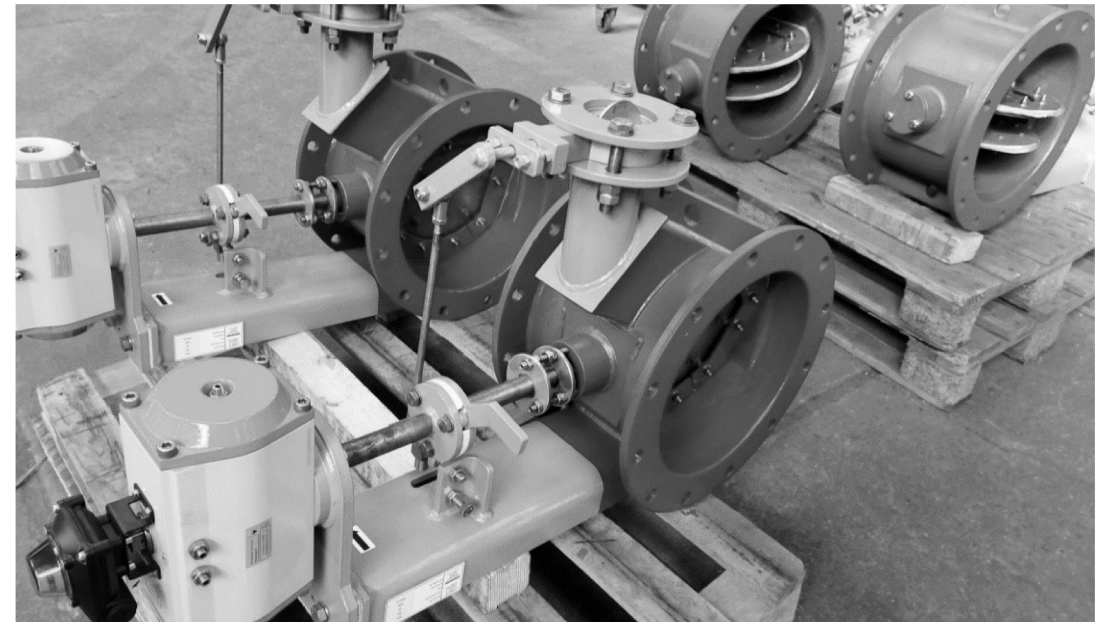
INT Production JCS



Our products

Dampers for shipbuilding industry

INT Production JCS



Our products

Transport pallets

INT Production JCS



Our products

Various types of constructions made according to customer's order.

INT Production JCS



Our products

Various types of constructions made according to customer's order

INT Production JCS



Our products

Welded structures hot-dip galvanized, electroplating, metallizing and painted.

INT Production JCS



We provide our services all over the world

OUR CUSTOMERS IN THE WORLD

- » Manufacturers of wind turbines
- » Transport companies
- » Manufacturers of railway vehicles
- » Manufacturers of outdoor event equipment and sanitary containers
- » Manufacturers of recycling machines
- » Offshore industry companies
- » Agricultural machinery manufacturers
- » Steel works





WELCOME TO COOPERATION



Alicja Kowalek



+48 95 746 10 34



a.kowalek@int-production.pl



Ewelina Tołysz



e.tolysz@int-production.pl



www.int-production.pl



Okrętowa 2, 74-320 Barlinek